



OPEN HOUSE FACT SHEET

Salt Palace Convention Center Sign Standards

0 - 170 S West Temple; 0 - 200 S 200 W; 212-228 W 100 S; 55 S 300 W

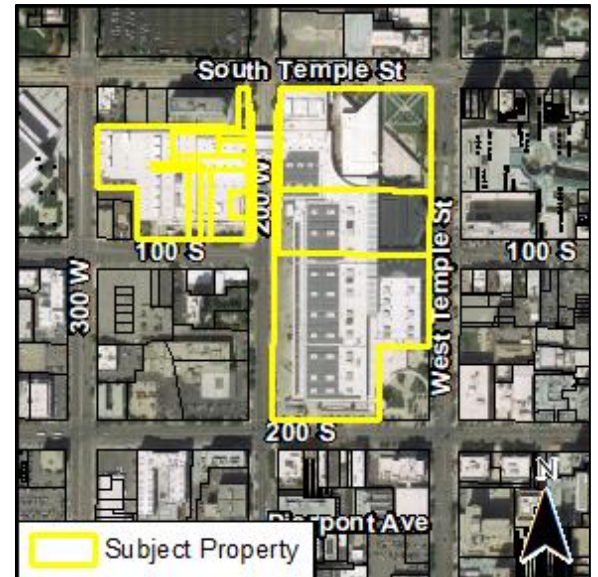


PLNPCM2023-00154

April 26, 2023

SUMMARY OF THE PROPOSAL

Salt Lake City has received a request from Architectural Nexus, representing the property owner, to amend the text of the zoning ordinance as it pertains to signage for the Salt Palace Convention Center, located on West Temple between approximately 200 South and South Temple, 200 West between approximately 200 South and South Temple, 100 South between approximately 300 West and 200 West, and at 55 South 300 West. **The proposal would create standards for exterior signage that are specific to the Salt Palace Convention Center.** Currently, the Salt Palace must conform to the general signage standards for the D-4, Downtown Secondary Central Business District, which is the zoning district the property is located in. The property proposed to be included in the new signage standards is approximately 27.93 acres or 1,216,630 square feet in size. The applicant is proposing to create specific standards for the Salt Palace based on the argument that the Convention Center has unique needs for signage from other properties in the D-4 zoning district.



PLANNING STEPS

- The Planning Division is in the process of obtaining public comment on this project to help identify concerns and issues from the public.
- The project will be reviewed as a Zoning Text Amendment proposal by Staff and will be scheduled for a public hearing at an upcoming Planning Commission meeting, who will vote to send a recommendation to the City Council.
- The project will then be transmitted to the City Council for a public hearing and vote.

NEED MORE INFORMATION?

1. Go to the SLC Citizen Access Portal: <https://citizenportal.slcgov.com/Citizen/Default.aspx>
2. Click "Planning Check or Research Petitions"
3. Type the petition number PLNPCM2023-00154
4. Click on "Record Info"
5. Select "Attachments" from the drop-down menu to see the submitted plans.

CONTACT INFORMATION

If you have any questions or comments, please contact:

Michael McNamee, Principal Planner
801-535-7226
michael.mcnamee@slcgov.com